

CECIL ASHBURN COLLABORATIVE MEETING

GrowCove and City of Huntsville
Goldsmith-Schiffman Elementary School
Sept. 7th, 2018, 6pm



Meeting Agenda

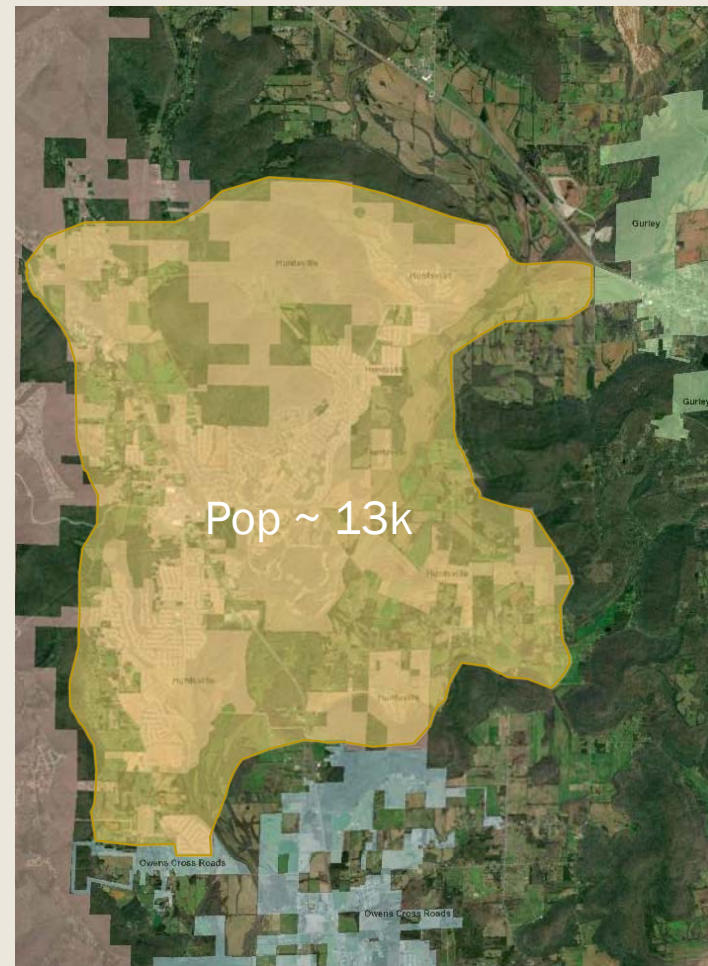
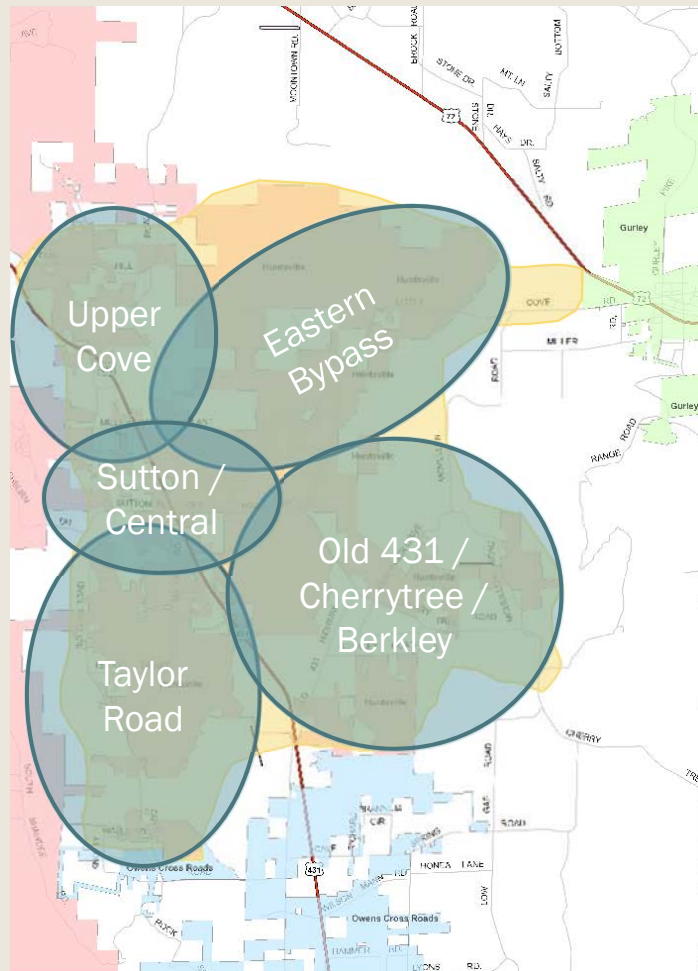
- Introductions
- GrowCove Overview
- Presentation by GrowCove
- Presentation by City
- Question & Answer Forum
- Next Steps

Introductions





Our Geography – GrowCove Approximate Area



Note: Boundaries and names are not formally defined, and are meant for general identification purposes only 5

Why are we here?

- The Cecil Ashburn project affects Cove residents directly, as well as people in Jones Valley and other nearby geographies
- We want to better understand the City's goals, plans, and methodology
- We want to work with the City to minimize impacts
- We want to help you disseminate accurate, timely information to minimize misunderstandings

Our understanding of major citizen concerns

- Transparency, Communications, and Orderly Implementation
- Scope Change
 - *Daily opening → full closure*
 - *3 years starting in summer → 1 year starting in winter*
- Traffic Congestion and Unpredictability
 - *Alternative travel modes and ridesharing*
 - *Alternative Routes*
- Safety
 - *Eastern Bypass*
 - *On-Corridor*
- Costs
 - *Business Impacts*
 - *Flexibility*

Please see handout and supplemental slides for details

GrowCove Goals for Cecil Ashburn

- Minimize
 - *Disruption to residents, businesses, organizations and visitors*
 - *Overall costs*
 - direct to Huntsville City taxpayers
 - indirect externalized costs to people impacted by construction
- Maximize
 - *Safety*
 - *Smooth traffic flow*
 - *Communication, transparency, predictability*
 - *Accordance with local long-range plans, goals, and objectives*

GROWCOVE RECOMMENDATIONS

GrowCove Recommendations (1)

- Full transparency and collaboration
- Complete following items prior to any construction phases involving full-closure of Cecil Ashburn.
 - *Efficient and Planned Implementation*
 - Transit Study
 - Commuter Study
 - Big Picture – Cove
 - Main Street South Huntsville (at least partial completion)
 - Adherence to existing plans (bicycle / greenway, Eastern Bypass extension in LRTP, etc)
 - Any construction phases involving the full-closure of Cecil Ashburn should be started over the summer, rather than mid-school year

GrowCove Recommendations (2)

- ...Continued: Complete following items prior to any construction phases involving full-closure of Cecil Ashburn.
 - *Traffic Operations: Alternative Route Upgrades*
 - Little Cove Road and extension
 - Intersection improvements at 72
 - Governor's Resurfacing
 - *Ridesharing and transit opportunities*
 - Advertising of and assistance with carpool and vanpool programs
 - Coordinate with major employers to implement travel demand mgt strategies (flex-time or core hours, telecommuting, preferred parking for carpools)
 - Identification and implementation of park & ride locations, and express buses to major employers
 - Coordination with student transportation services at HHS and Randolph

GrowCove Recommendations (3)

- ...Continued: Complete following items prior to any construction phases involving full-closure of Cecil Ashburn.
 - *Safety:*
 - Assurance of and plan for emergency service coverage
 - Alternative route upgrades
 - *Pre-emptive reduction of business and resident impact*
 - Scheduled, regular corridor openings
 - Replacement of certain Cove amenities (Community Center / Library, explore pop-up or shared business opportunities)
 - Other measures?

Thank You!